

SCC

SOCIETY OF COSMETIC CHEMISTS

THE SOUTHEAST CHAPTER



Volume XXXI, Number 5

November 2013

2013 Southeast Chapter Officers

CHAIR

Kevin Fowler
(901)876-5030
buckeyehollow@bigriver.net

CHAIR-ELECT

Stephen Baldwin
Merck Consumer Care
(901) 320-2747
stephen.baldwin@merck.com

SECRETARY

Billy Maness
Merck Consumer Care
(901) 320-2157
billy.maness@merck.com

TREASURER

Lisa Sloan
Merck Consumer Care
901-320-2784
lisa.sloan@merck.com

Newsletter Editor

John Wagner
Merck Consumer Care
(901) 320-2060
john.wagner2@merck.com

Officer Installation Meeting Wednesday, November 20, 2013

Café Society
212 N. Evergreen St.
Memphis, TN

5:30 pm to 6:15 pm - Cocktail / Registration

6:15 pm to 8:00 pm - Dinner

8:00 pm – Officer Installation

\$45 – SCC chapter member

\$50 – non-SCC member

RSVP by noon, Nov. 18th to Billy Maness

(901) 320-2157 or e-mail: billy.maness@merck.com



Inside this Issue...

Page 2... Message from the Southeast Chair

Page 10 ... IFSCC Oct. 23-26, 2016



AJINOMOTO®

The science of
amino acids.
The essence of
natural beauty.

(201) 292-3180
www.ajichem.com



Your source
for speciality
chemicals
worldwide

RITA

RITA Corporation
850 South Route 31
Crystal Lake,
IL 60014 USA
T 815.337.2500 or
toll free 1.800.426.7759
F 815.337.2522
www.ritacorp.com

Message from the Southeast Chair

Well, another year is coming to a close and I've really had a great time with the chapter! It's been a landmark year with many accomplishments highlighted by the first chapter satellite meeting in Chattanooga, the first independent chapter website, first independent chapter insurance and soon to be first independent incorporation. Thanks to everyone who supported the efforts! By the way, be sure to stop by the website and see what a great job Lisa and John did setting it up (www.southeastsc.org). Thanks to John's ongoing maintenance, the site has all the current info and a photo gallery that continues to grow. Good idea to check it out...you never know what embarrassing pose we might have caught you in!

Our meetings throughout the year were great; a special thanks to our speakers! Supplier's night at the Belz Museum of Asian and Judaic Art was one of the best we've had. Lisa Sloan is our House Chair and has always done an excellent job lining up and managing venues that reflect variety and great times. Her tireless nature is proven in that she will be doing double duty in 2014 as both House Chair and Treasurer...thanks Lisa!

Our outgoing Treasurer is Cathy Anglin, an always stalwart supporter of SCC activities. She's done a fantastic job with the books in 2012 and 2013 and we all appreciate her continuing contributions...thanks Cathy!

Thanks also to our incoming Chair, Stephen Baldwin. He'll be taking the reins for 2014 and has also supplied a signature or two in 2013 when I was away...all the best and thanks Stephen!

Billy Maness is our outgoing secretary and has done a great job keeping things organized. We really appreciate your contributions and we'll be seeing you at upcoming meetings...thanks Billy!

A big thanks to all our supplier sponsors throughout the year...you guys make it all possible...thanks! Our meetings are a success because so many suppliers and colleagues attend and enjoy the good times with us...thanks guys!

Last but certainly not least is John Wagner, our outgoing Area IV Director and continuing Newsletter Editor and Chapter webmaster. He wears many other hats throughout the year but has always been the lifeblood of the Southeast Chapter...thanks John!

Our last meeting of the year is always a special time. Officer installation will be on November 20th this year. Lisa picks out an exceptional place for the ceremony and everyone always has a great evening; please plan on attending! More details are elsewhere in this newsletter.

I've had a wonderful time over the past year and I'm looking forward to another great one ahead. Happy Holidays to all and I'll see you in November and at next year's meetings!

Kevin Fowler
Chair Southeast Chapter SCC




The soul and science of beauty.
Foresight, responsibility, realization.



Evonik Industries AG Essen, Germany PHONE +49 201 173-2854
Evonik Goldschmidt Corporation Hopewell, Virginia, USA PHONE +1 804 541-8658
 personal-care@evonik.com responsibility-personal-care@evonik.com
 www.evonik.com/personal-care

Evonik. Power to create.



EVONIK
INDUSTRIES

PersonalCare



Lonza Personal Care
Recapturing beauty through technology

For product information, please visit
www.lonza.com or email us at
lonzapc.arch@lonza.com.

70 Tyler Place, South Plainfield, NJ 07080
 +1-908-561-5200

Lonza



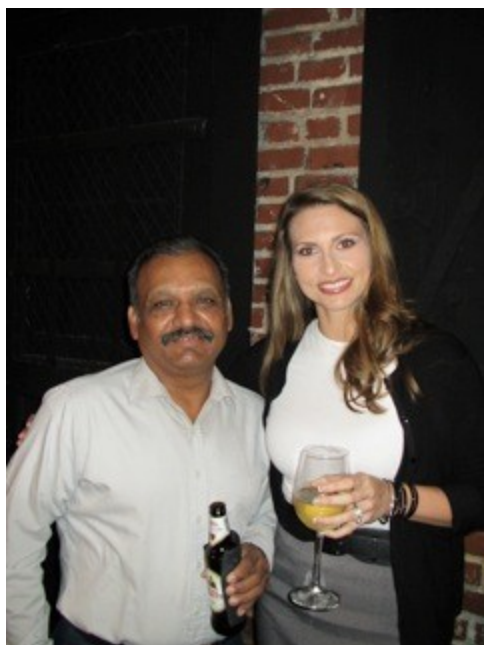
Zemea® Propanediol

Natural glycol alternative

- Increased humectancy
- Elegant sensorials
- No skin irritation
- Boosts preservative efficacy
- ECOCERT approved

LEARN MORE AND ORDER A SAMPLE

duponttateandlyle.com/zemea • +1.866.404.7933



BOTANICAL
EMOLLIENTS
& SPECIALTY
PARTICLES



24/7 Online Ingredient Information:

iLabel®
www.floratech.com/info

The Natural Solution

In the Southeast SCC Region:

Essential Ingredients - Mike Crum | 770.831.9010 |
mcrum@essentialingredients.com

ISO 9001

Formulating beauty

The real secret to beauty is great chemistry. Our formulating expertise, teamed with a solid commitment to sustainable practices, supports your brand and keeps the world beautiful.


Get to know AkzoNobel Global Personal Care.
Where science is a thing of beauty™

Learn more at akzonobel.com/personalcare
Tel: +1 888-331-6212



AkzoNobel
Tomorrow's Answers Today

MADE IN THE U.S.A.



Active Concepts

Tomorrow's vision... *Today!*®

Bio-active Ingredients • Bioferments
 Proteins • Botanical Extracts
 Delivery Systems
 Functional ingredients

info@activeconceptslc.com
 Phone: 704.276.7100



Innovation for
 Hair & Skin



croda.com/na/pc

CRODA

Celebrating 10 Years!
 2003 - 2013



kinetik
 www.kinetiktech.com
 e-mail: info@kinetiktech.com
 t: (732) 335-5775

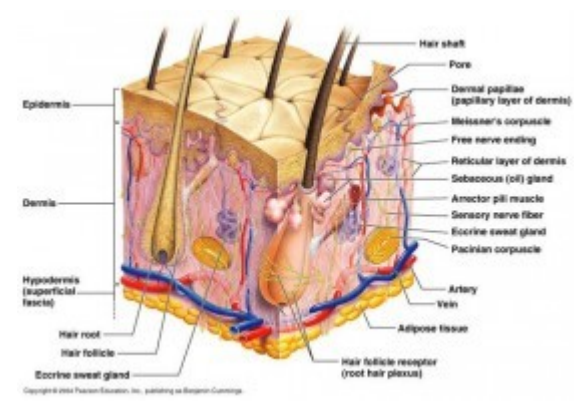
How Do Skin Moisturizers Work?

by Kelly Dobos (Reprinted from www.chemistscorner.com)

Our skin has many important functions, including the prevention of [water loss](#). Dry skin, or [xerosis](#), is a common problem that many consumers seek to treat with cosmetic [moisturizers](#). Whether for the face, hands, feet, or entire body moisturizer formulations are an important part of any [cosmetic chemist's](#) tool kit.

Skin Structure

First, let's talk a little about the structure of your skin. The upper layer of the skin, the epidermis, is further subdivided into four distinct layers. These layers from bottom to top are the stratum basale, the stratum spinosum, stratum granulosum, and the stratum corneum. There presence of a fifth layer, the stratum lucidum, can be seen in thicker areas of the epidermis like the soles of your feet.



Keratinocytes, the main type of cells in the epidermis, migrate up from the dermis and undergo many changes to become a flat, keratin rich corneocyte before being shed. During this progression through the layers of the epidermis, lipids are released into the spaces between cells and the skin's own natural moisturizing factor (NMF) is generated. These lipids form a barrier to water loss and help retain the skin's NMF. Disruption of this lipid matrix and subsequent loss of hydration can lead to dry, [flaky skin](#).^{1,2}

Cosmetic moisturizers are used to help repair the lipid barrier and restore hydration.

How cosmetic moisturizers work

Although there are some more specialized approaches, like the use of alpha-hydroxy acids or quaternary conditioning agents, most cosmetic moisturizers improve the condition of dry skin by utilizing one of three major ingredient types including

1. Humectants
2. Emollients
3. Occlusive agents.

Humectants

Humectants include ingredients like glycerin, urea, and pyrrolidone carboxylic acid (PCA). Humectants work by attracting water from the dermis below and helping to keep that water bound in the stratum corneum. Glycerin is used frequently because of its [low cost](#) and high efficacy, but a tacky feel on the skin is one of the drawbacks of formulating with high levels of humectants. When optimizing skin formulations, cosmetic chemists try to reduce these negative properties of humectants.

Occlusive Agents

Occlusive agents increase moisture levels by providing a physical barrier to epidermal water loss. Ingredients with occlusive properties include petrolatum, waxes, oils, and silicones. Some occlusive agents like petrolatum can leave a heavy feel so they are often combined with other ingredients, like emollients, to improve consumer appeal.

Emollients

Emollients provide some occlusivity and improve the appearance of the skin by smoothing flaky skin cells. There are many different types of emollient esters and oils available to a [formulation chemist](#).^{3,4} Emollients are generally grouped by their ability to spread on the skin. By combining emollients with the different spread rates you can tailor the skin feel of a moisturizer. You can test for these differences by using different emollients in a standard base lotion. Additionally, emollient lipids similar to those naturally found in the skin may also increase the rate of barrier repair.⁵

Putting it together

Each of these ingredient types has a different mechanism of action and most cosmetic moisturizers will use a combination of these ingredients to create a synergistic effect and mitigate certain aesthetic or financial drawbacks. Product claims and skin feel are also considerations to be aware of, so don't be afraid to experiment with your options when creating a moisturizer. For tips on creating successful skin formulations, see our previous article on [HLB formulating](#).

References

1. Harding CR; The Stratum Corneum: Structure and Function in Health and Disease, Dermatologic Therapy; 2004. Vol. 17, pp 6 -15.
2. Wickett RR, Visscher MO; Structure and Function of the Epidermal Barrier, American Journal of [Infection Control](#), 2006. Vol. 34, Issue 10, pp S98 - S110.
3. Flynn TC, Petros J, Clark RE, Viehman GE; Dry Skin and Moisturizers, Clinics in Dermatology, 2001. Vol. 19, pp 387 - 392.
4. Rawlings AV, Canestrari DA, Dobkowski B; Moisturizer Technology versus Clinical Performance. Dermatologic Therapy; 2004. Vol. 17, pp 49 - 56.
5. Mao-Qiang M, Brown BE, Wu-Pong S, Feinglod KR, Elias PM; Exogenous Non-physiologic vs. Physiological Lipids. Divergent Mechanisms for Correction of Permeability Barrier Dysfunction. Archives of Dermatology, 1995. Vol. 131, pp 809 - 816

Read more at <http://chemistscorner.com/how-do-skin-moisturizers-work/#dW0iJTdCXXS3GWf2.99>

*Silicone solutions for every **body***



CHEM SiL
SILICONES, INC.

We Provide YOUR Silicone Solutions™

Manufacturer of Specialty Silicones
for Cosmetics and Personal Care

877.700.0302 • www.chemsil.com



McCullough & Associates

1.800.969.1606

www.mccanda.com

**Providing Exceptional
Sales & Service to
the Personal Care
Industry in the
Southeast since 1968.**



Actives
Botanical Extracts
Emollients
Emulsifiers
Fragrances
Functional additives
Pearlescent pigments
Preservatives
Rheology modifiers
Silicones
Sunscreen Actives
Surfactants

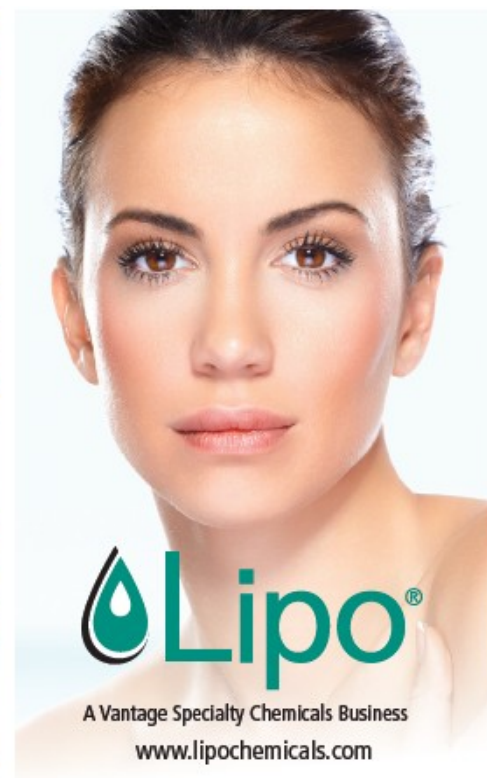
Specializing in Fragrance Solutions

Orchidia provides you
with responsive sample
development and superior
applications and technical
support, as well as insight
into the latest market trends.

- Air Care
- Personal Care
- Fine Fragrances
- Household
- I&I Market

MATT TROTTER
Technical Sales Representative

mtrotter@orchidia.com
p (678) 427-8997



Lipo®

A Vantage Specialty Chemicals Business
www.lipochemicals.com



www.essentialingredients.com
770-831-9010



OXITENO

www.oxiteno.com

• Surfactants • Emollients • Solvents



greenformance

Sustainability And Performance

(630) 364 5100

oxiteno.usa@oxiteno.com

Introducing Glenn Corporations New Brand Identity

Our Legacy, values and vision of the
future have come together to create
your next experience with us.



Scan to learn
more



Aspire to
experience more.

Supporting the development of formulation
solutions for everyday life™

Glenn 

888.453.6267 // glenncorp.com // Lake Elmo, MN



CUSTOPOLY® POLYMERS

Conditioning, Emulsifying,
Stabilizing, Suspending,
Thickening and Gelling

Custom® INGREDIENTS

803-377-1213

www.custoblend.com



LEADERS IN WAX
TECHNOLOGY SINCE 1904

• Beeswax • Carnauba • Candelilla • Ceresine • Ozokerite
• Paraffin • Microcrystalline • Custom Blends • Natural Wax Jellies
• Puresters • Olive, Avocado, Sweet Almond, Golden Jojoba & Sulfur Butters



STRAHL & PITSCHE INC.



P.O. Box 1098, 230 Great East Neck Road., West Babylon, NY 11704

(631) 587-9000 Fax: (631) 587-9120 web: www.spwax.com

MEMBER: CTFA • SCC • NCA • AMERWAX



The Natural Solution

**BOTANICAL EMOLLIENTS &
SPECIALTY PARTICLES**

**Ingredient Information
24/7 Online**

iLabel™
www.floratech.com/info

In the Southeast:
Essential Ingredients
770.831.9010
Mike Crum
mcrum@essentialingredients.com



Inspire Imagine Innovate

THE US SOCIETY OF COSMETIC CHEMISTS HOSTS THE 29TH IFSCC CONGRESS
OCTOBER 23-26, 2016

SCC WALT DISNEY WORLD DOLPHIN RESORT
LAKE BUENA VISTA, FLORIDA

Beyond Dreams into New Frontiers: Inspire, Imagine, Innovate