

SCC

SOCIETY OF COSMETIC CHEMISTS

THE SOUTHEAST CHAPTER



Volume XXX, Number 2

June 2012

2012 Southeast Chapter Officers

CHAIR

Stephen Baldwin

Merck Consumer Care

(901) 320-2747

stephen.baldwin@merck.com

CHAIR-ELECT

Kevin Fowler

Merck Consumer Care

(901) 320-5131

kevin.fowler@merck.com

SECRETARY

Billy Maness

Merck Consumer Care

(901) 320-2157

billy.maness@merck.com

TREASURER

Cathy Anglin

J. Strickland & Co.

(662) 890-2306, ext. 1304

canglin@jstrickland.net

Newsletter Editor

John Wagner

Merck Consumer Care

(901) 320-2060

john.wagner2@merck.com

SCC Southeast Chapter Supplier Social Wednesday, June 20, 2012

Location: Memphis College of Art

1930 Poplar Ave inside Overtone Park,

(parking lot on Veterans Plaza Drive)

Memphis, TN 38104

5:30 to 6:30 pm - Social Hour and tour of art

6:00 to 7:30 pm - Dinner

7:30 pm - Door Prizes

\$45 SCC members / \$50 non-members

Contact Stephen Baldwin for sponsor information
at 901-320-2747 or stephen.baldwin@merck.com

RSVP by noon, June 18th to Billy Maness

(901) 320-2157 or email: billy.maness@merck.com



Inside this Issue...

Page 2... Map to Memphis College of Art

Page 3... Message from the Southeast Chair

Page 6.... Advice to the Lab Lorn

Page 10... Save the Dates

**Directions to SCC Southeast Chapter Annual Supplier Social Event at
Memphis College of Art (behind Brooks Museum)
1930 Poplar Ave. in Overton Park
(parking lot on Veterans Plaza Drive in front of Memphis College of Art)**

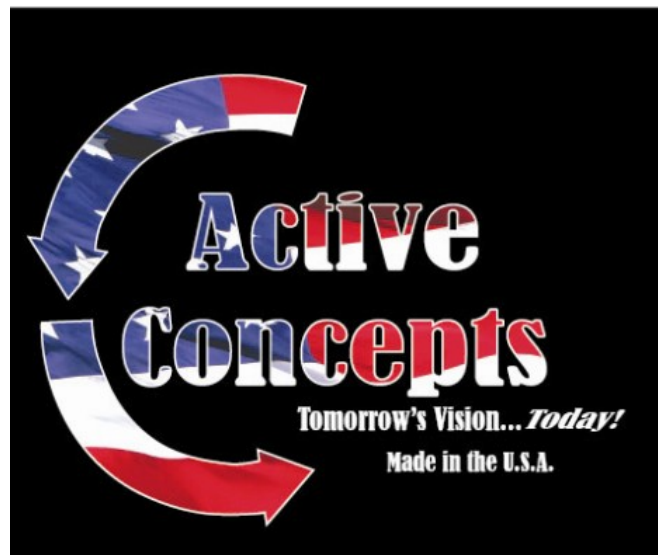


Formulating beauty

The real secret to beauty is great chemistry. Our formulating expertise, teamed with a solid commitment to sustainable practices, supports your brand and keeps the world beautiful.

Get to know AkzoNobel Global Personal Care.
Where science is a thing of beauty™

Learn more at akzonobel.com/personalcare
Tel: +1 888-331-6212



Bio-Botanica, Inc.



BIO-BOTANICA, INC.

Celebrating



40 Years
Of
Family Tradition


to us,
innovation
comes...
naturally



kinetik

www.kinetiktech.com
e-mail: info@kinetiktech.com
t: (732) 335-5775

**Your source
for speciality
chemicals
worldwide**



RITA Corporation
850 South Route 31
Crystal Lake,
IL 60014 USA
T 815.337.2500 or
toll free 1.800.426.7759
F 815.337.2522
www.ritacorp.com

Message from the Southeast Chair

Your Southeast Chapter officers are looking forward to seeing you all at this year's Suppliers Social Event on June 20th at the Memphis College of Art in the Main Gallery of Rust Hall.

Thanks to everyone who have already sent in your sponsorship money and/or door prizes and to those who are planning to do so.

Back by popular demand we will once again have the pleasure of listening to:

"The Memphis Harp Ensemble"

If you have an interest in being a title sponsor for the Ensemble, please let me know.

Special THANKS to McCullough and Associates for sponsoring the cocktail hour again this year.

During our Suppliers Social Event, we will be touring the Memphis College of Art (<http://www.mca.edu/>) annual Alumni Summer Art Exhibition. "The show features works from alumni of many years past as well as those who graduated in recent years, boasting pieces from an array of art disciplines, including watercolor, sculpture, pottery, photography and mixed media."

The MCA campus is located at 1930 Poplar Ave. in Memphis, Tennessee. The main building, Rust Hall is located within the 342-acre Overton Park in midtown Memphis. (See map on page 2).

I always look forward to meeting my old friends and making a few new ones at these events.

Your continuing support and attendance is what makes this event special. It won't be as fun without you.

See you there!

Stephen Baldwin
Southeast Chapter Chair

We help you to create
competitive advantage...

DIFFERENTLY.

At Glenn Corporation, we help you to develop technologically advanced beauty products that are competitively aligned with market trends and industry forecast.

We are the leading technical service and marketing-oriented distributor of specialty chemicals with a focus on the Personal Care and Color Cosmetics markets.

Supporting the development
of formulation solutions
for everyday life™

GLENN
CORPORATION

A member of The DeWolff Companies
888.453.6267 • www.glenncorp.com

Ei Essential
INGREDIENTS,



www.essentialingredients.com
770-831-9010

SCC Southeast Supplier Social Event - June 20th

Suppliers are invited to help sponsor this event with cash donations and/or door prizes.

We have special categories of sponsorship this year: silver (\$100), gold (\$250) and platinum (\$500) as well as sponsorship for special activities such as the harp ensemble. These special category sponsors will be listed by level on a poster at the event, and recognized from the podium.

If you would like to make a monetary contribution, please make checks payable to SCC-Southeast Chapter and mail your contribution to:

J. Strickland & Co

Attn: Cathy Anglin

10420 Desoto Road

Olive Branch, MS 38654

As a supplier of the cosmetic industry, this is a wonderful opportunity for you to meet with representatives from product development, purchasing, and management divisions from many of the personal care companies in our area.

If you have any questions about the event or need additional information, please contact Stephen Baldwin at 901-320-2747 or Cathy Anglin at 662-890-2306 ext 1304.



Specializing in Fragrance Solutions

Orchidia's full-service lab offers quick sample and production turn-around times, application and technical support, and insight into the latest market trends.

- Air care
- Personal care
- Fine fragrance
- Household
- I&I market



MATT TROTTER
Technical Sales Representative
mtrotter@orchidia.com
p 678.427.8997 / f 630.620.9724



Lipo®

A Vantage Specialty Chemicals Business

BEAUTY IS OUR SCIENCE®


www.lipochemicals.com



CHEM SiL®
SILICONES, INC.

We Provide **YOUR** Silicone Solutions™
Manufacturer of Specialty Silicones
for Cosmetics and Personal Care
877.700.0302

877.700.0302 • www.chemsil.com




McCullough & Associates
1.800.969.1606
www.mccanda.com

Providing Exceptional Sales & Service to the Personal Care Industry in the Southeast since 1968.

Actives
Botanical Extracts
Emollients
Emulsifiers
Fragrances
Functional additives
Pearlescent pigments
Preservatives
Rheology modifiers
Silicones
Sunscreen Actives
Surfactants

"Advice to the Lab Lorn" is intended to offer advice, pertinent information or maybe just solace, for confusing, challenging or downright murderous issues facing SCC members in their labs. Send us your questions at lablorn@caliscc.org and we'll track down an authority or two and get back to you in the next offering of the Lab Lorn. We won't publish your name for all to see. Your secrets are safe with us.

John Garruto - Vice President Formulation Development, SkinMedica - Editor

Q. When you see that a natural oil has a high oleic content, what does that mean and how high is high enough?

A. I assume that you are referring to the High Oleic (HO) oils most commonly used in personal care products such as HO Sunflower and HO Safflower Oil, so we will proceed with that assumption. Triglyceride oils such as sunflower oil and safflower oil contain a number of fatty acids in their profiles such as oleic acid, linoleic acid, stearic acid and palmitic acid. Generally the levels of stearic and palmitic acids are less predominant and they have relatively high oxidative stability so we will focus on the principal fatty acids of oleic and linoleic acid and their ratios in these oils. Remember that oleic acid is a monounsaturated fatty acid with only one double bond while linoleic acid is a polyunsaturated fatty acid and has two double bonds. The more double bonds a fatty acid possesses, the lower the oxidative stability and as such, an oil with a higher ratio of oleic acid to linoleic acid will have greater oxidative stability.

The fatty acid content of regular (non-HO) safflower oil and sunflower oil is approximately 10-20% oleic acid and 70-75% linoleic acid, hence a very low AOM (Active Oxygen Method) stability and will be easily oxidized and become rancid. The fatty acid content of HO safflower oil is approximately 73% oleic acid and 15% linoleic acid and has a far greater oxidative value and higher AOM. HO sunflower oil generally contains approximately 78-88% oleic acid and 3-10% linoleic acid and has an even greater AOM stability.

So...how high is high enough? I would say if you are looking for a relatively high level of oxidative stability, you should select an oil with the highest level of oleic acid and lowest linoleic acid content. That usually tips the balance in the favor of HO sunflower oil which has at least twice the oxidative stability of HO safflower oil. That being said, HO sunflower oil is more expensive than HO safflower oil and this factor should be taken into consideration as well.

Innovation for
Hair & Skin



croda.com/na/pc CRODA



**Manufacturer of Organosilicones
Mild Surfactants, Emulsifiers, &
EO/PO Derivatives**
McCook, Illinois 60525-3204
Tel: 708 442 9100 – Fax: 708 442 0213
Email: sales@elecorporation.com
Website: www.elecorporation.com



**Your Local Supplier since 1932 for Chemicals
serving the Industrial, Cosmetic, Personal
Care, and Pharmaceutical Markets.**

Memphis, TN • Jackson, MS
New Orleans, LA • Shreveport, LA
(800) 232-6776 • (901) 363-7720
www.idealchemical.com

ABITEC Personal Care Products
A perfect balance between science and nature

NATURAL | VEGETABLE SOURCED |
GREEN ALTERNATIVES ECOCERT



ABITEC
A PERFECT BALANCE COMPANY
abiteccorp.com

Toll Free: 800.555.1255 | info@abiteccorp.com

presperse
insight • innovation • inspiration



T +1 732 356 5200
www.presperse.com

PCI PHOENIX CHEMICAL, INC.

Innovative Chemical Solutions
for Performance Driven
Research

- Esters
- Silicones
- Polymers
- Cationics
- Quaternaries

Contact us:
(908)707-0232
imperante@phoenix-chem.com

Check out our website:
www.phoenix-chem.com

Zemea® Propanediol
The natural glycol alternative



100% Natural
Petroleum-free
Improved Humectancy
No Skin Irritation
Boosts Preservative
Efficacy

**DuPont Tate & Lyle
BioProducts** +1-866-404-7933
www.duponttateandlyle.com/zemea.php



**Where do you turn for
innovative solutions?**



Exactly your chemistry.

When it comes to personal care, there is no substitute for natural products. Try our latest Biotech innovations: VITIPURE™, VELSAN® and ZENVIVO™ unique, totally natural products for hair and skin care.

Clariant Corporation, 625 East Catawba Avenue,
Mt. Holly, NC 28120 Tel: 800.942.7239
www.personalcare.clariant.com

What do you need?

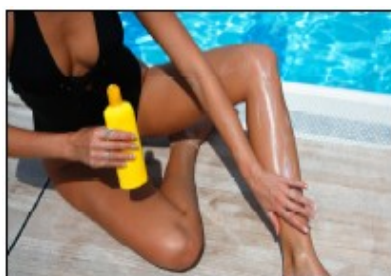
COCKTAILS, FOOD, & FISH

2012 Scientific Seminar Social Event
South Carolina Aquarium - Charleston, SC
May 30th, 2012, 7-10pm

Sponsorship opportunities available,
higher sponsorship levels include event tickets.

Ticket Price: \$100 if purchased by 5/1/2012

*For more information visit www.carolinascc.org,
click on 2012 Scientific Seminar Social.*



CUSTOPOLY® POLYMERS

Conditioning, Emulsifying,
Stabilizing, Suspending,
Thickening and Gelling

Custom® INGREDIENTS

803-377-1213
www.custoblend.com



**Big performance,
small footprint.**

What's the natural way to support skin's inherent barrier function? With Evonik's skin identical ceramides based on natural fatty acid amides. Produced in a sophisticated biotech process, our ceramides have proven anti-aging and protective properties. Profit from our renewable biotech innovation – and put remarkable benefits into your skin care products.

Evonik Industries AG Essen, Germany PHONE +49 201 173 2854
Evonik Goldschmidt Corporation Hopewell, Virginia, USA PHONE +1 804 541 8658
personal-care@evonik.com responsibility-personal-care@evonik.com www.evonik.com/personal-care

Evonik. Power to create.



R2 EPC_201108_AZ_110206_Cosmetics_Tobias_M_0009012011.indd 1 06.10.11 10:00

AJINOMOTO®

The science of
amino acids.
The essence of
natural beauty.



(201) 292-3180
www.ajichem.com



Lipo®

A Vantage Specialty Chemicals Business
BEAUTY IS OUR SCIENCE®
www.lipochemicals.com

NATURALLY KIAWAH SYMPOSIUM

Kiawah Island, SC

September 26 - 28, 2012

SPECIAL EVENTS

Sept. 26 - CEP Course

Sept. 26 Evening - Cocktail Reception & Supplier Showcase
at Turtle Point Country Club

Sept. 27 - Full Day Technical Seminar

Sept. 28 - Annual Golf Outing at Osprey Point
Spa Treatment at the Sanctuary

FOR ADDITIONAL INFORMATION

Michelle Linscott - Michelle@xytrus.com

Michael Licciardello - mlicciardello@gracemg.com

SAVE THE DATE!

SCC Annual Scientific Seminar

Hosted by Area IV

May 31 – June 1, 2012

Charleston Marriott, Charleston, SC

Southwest Chapter Supplier's Day

August 23, 2012

Carolina Chapter Naturals Symposium

September 27-28, 2012

Kiawah Island, SC



The Natural Solution

**BOTANICAL EMOLLIENTS &
SPECIALTY PARTICLES**

Ingredient Information
24/7 Online

iLabel™
www.floratech.com/info

In the Southeast:
Essential Ingredients
770.831.9010
Mike Crum
mcrum@essentialingredients.com



**LEADERS IN WAX
TECHNOLOGY SINCE 1904**

• Beeswax • Carnauba • Candelilla • Ceresine • Ozokerite
• Paraffin • Microcrystalline • Custom Blends • Natural Wax Jellies
• Puresters • Olive, Avocado, Sweet Almond, Golden Jojoba & Sulfur Butters

**ECOCERT
LISTED
WAXES**

STRAHL & PITSCHE INC.



P.O. Box 1098, 230 Great East Neck Road., West Babylon, NY 11704
(631) 587-9000 Fax: (631) 587-9120 web: www.spwax.com
MEMBER: CTFA • SCC • NCA • AMERWAX